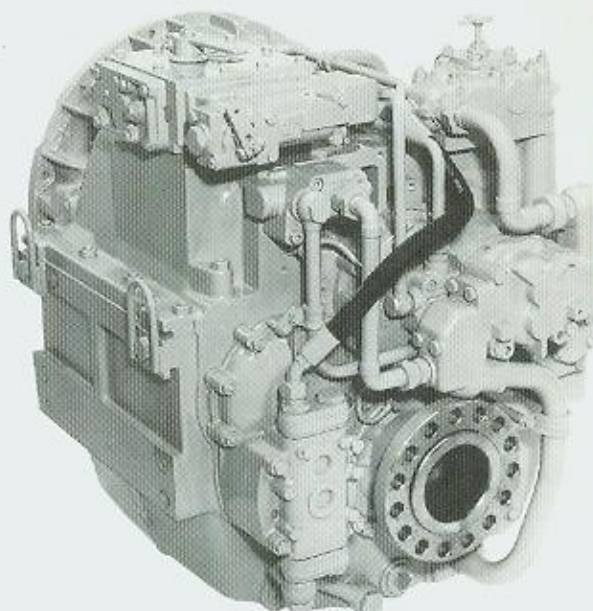


## MARINE TRANSMISSION SYSTEMS

**BW 250 / 255 / 256**

### ZF 2500/2550/2650 Series



<b>BW 250</b>	<b>ZF 2500</b>
<b>BW 250 A</b>	<b>ZF 2500 A</b>
<b>BW 250 V</b>	<b>ZF 2500 V</b>
<b>BW 255</b>	<b>ZF 2550</b>
<b>BW 255 A</b>	<b>ZF 2550 A</b>
<b>BW 255 V</b>	<b>ZF 2550 V</b>
<b>BW 255 P</b>	<b>ZF 2555</b>
<b>BW 255 AP</b>	<b>ZF 2555 A</b>
<b>BW 255 VP</b>	<b>ZF 2555 V</b>
<b>BW 256 P</b>	<b>ZF 2565</b>

#### DESCRIPTION

- Reverse reduction marine transmission with hydraulically actuated multi-disc clutches
- Non-reversing BU version also available
- Suitable for high performance applications in all types of fast craft, luxury motoryachts, patrol vessels, crew-boats etc.
- Fully works tested, reliable and simple to install
- Compatible with all types of engines and propulsion systems, including waterjets and surface-piercing propellers and c/p's
- Available in parallel shaft, down-angle or vee-drive configuration
- Design, manufacture and quality control standards comply with ISO 9001 and AQAP

#### MAIN FEATURES

- Lightweight aluminum alloy casing (sea-water resistant)
- Case hardened and precision ground gear teeth for long life and smooth running
- Output shaft thrust bearing designed to take maximum propeller thrust astern and ahead
- Compact, space-saving design, complete with integral oil cooler, pump and full-flow filter
- Smooth and reliable hydraulic shifting with control lever for attachment of push-pull cable or other operating system
- Suitable for twin engine installations (same ratio and torque capacity engine-wise or counter-engine-wise)

#### OPTIONAL EXTRAS

- Engine-matched torsional coupling
- Mounting brackets for rigid connection to foundation or elastic mounting brackets
- Trolling valve for slow-speed drive
- Propeller shaft flange and coupling bolt sets
- SAE 1 or SAE 0 bell housings (Standard and down-angle)
- Classification by all major Classification Societies on request
- Electric or pneumatic main control valves
- Monitoring kits
- PTO (live)
- Trailing pump

